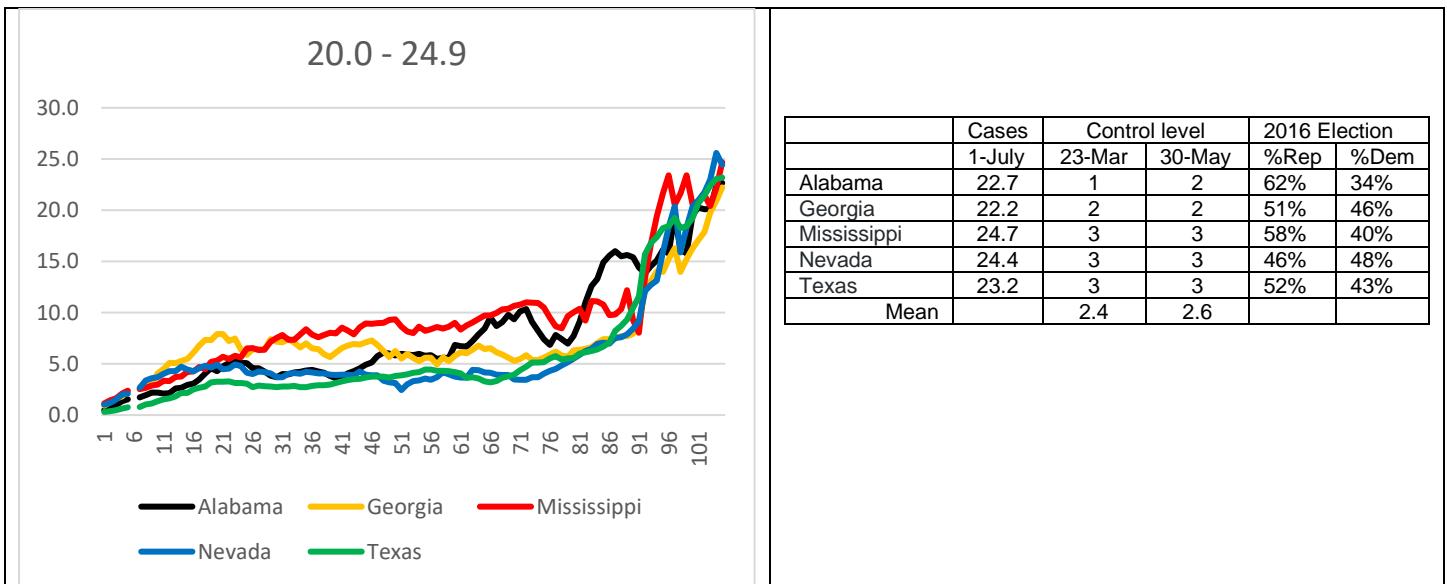
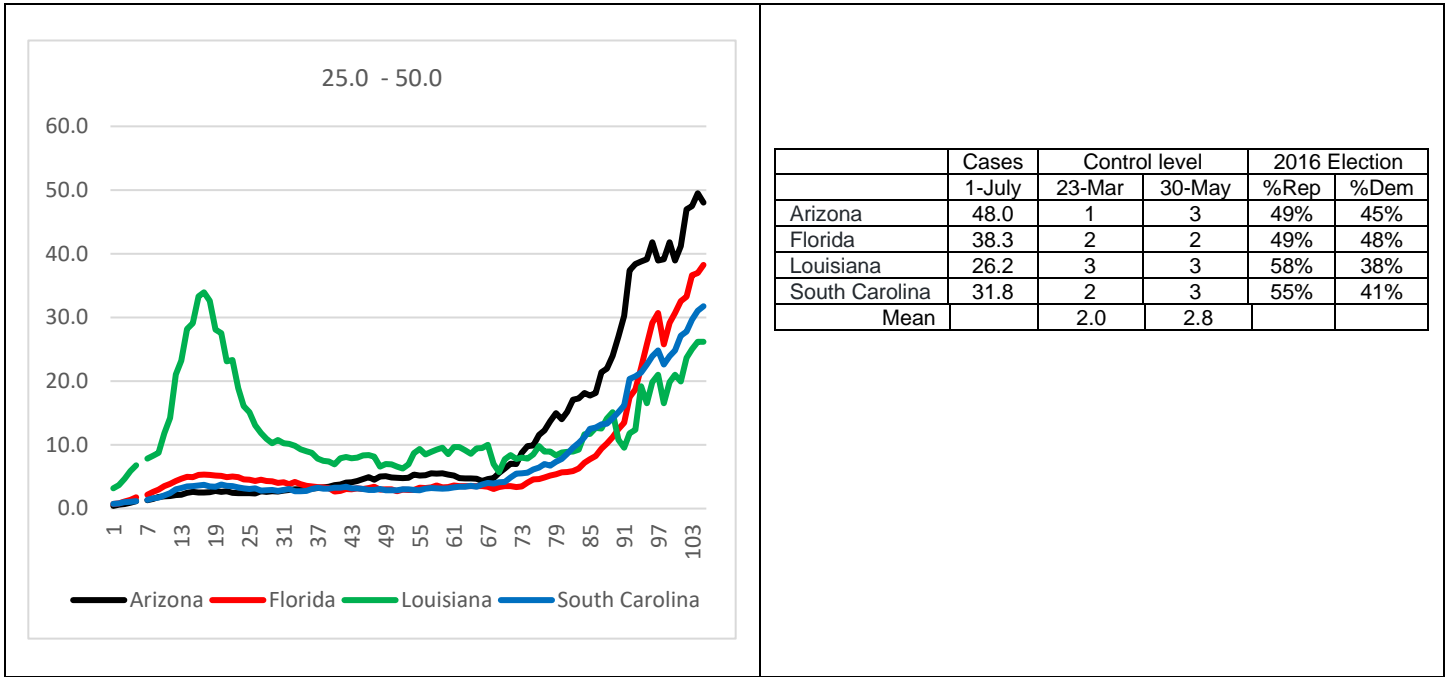
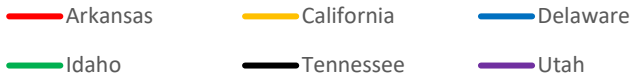
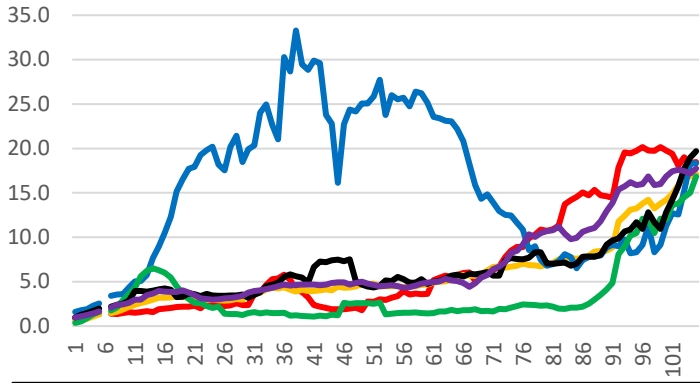


The Story Told by the Fifty United States (and the District of Columbia)

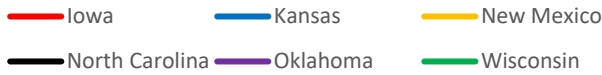
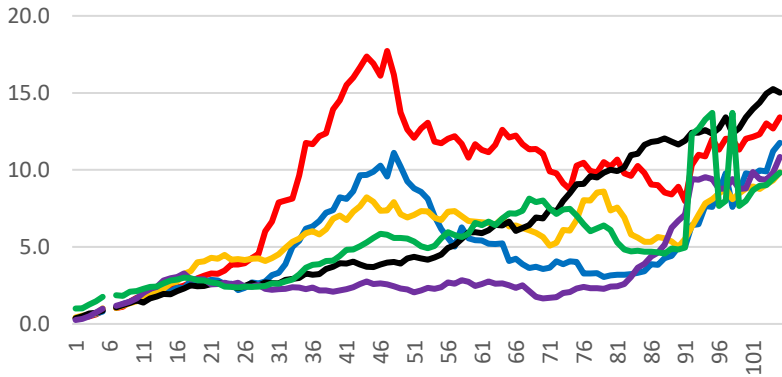
The curves representing new cases per 100,000 population form the base of the state analysis. I'll be adding more commentary soon, but here are basic graphs and stats for states grouped from high to low in order of their case rates as of day 103 (July 4, 2020).



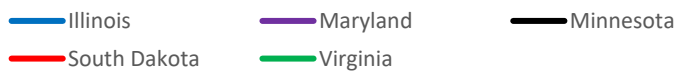
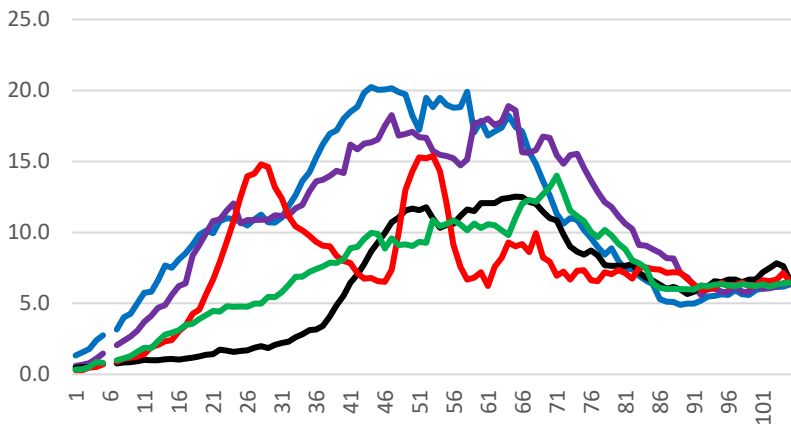
15.1 - 19.9



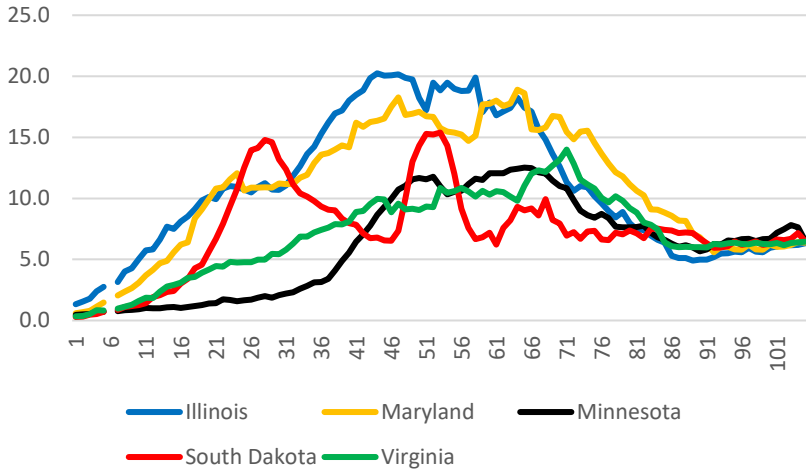
9.8 - 15.0



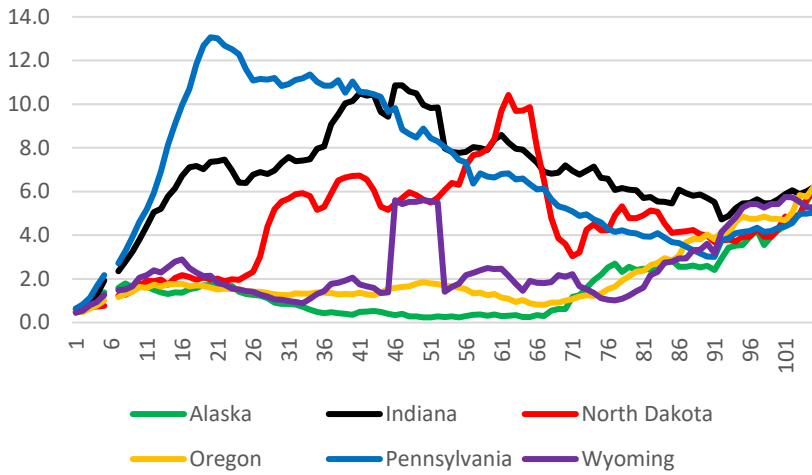
7.0 - 8.9



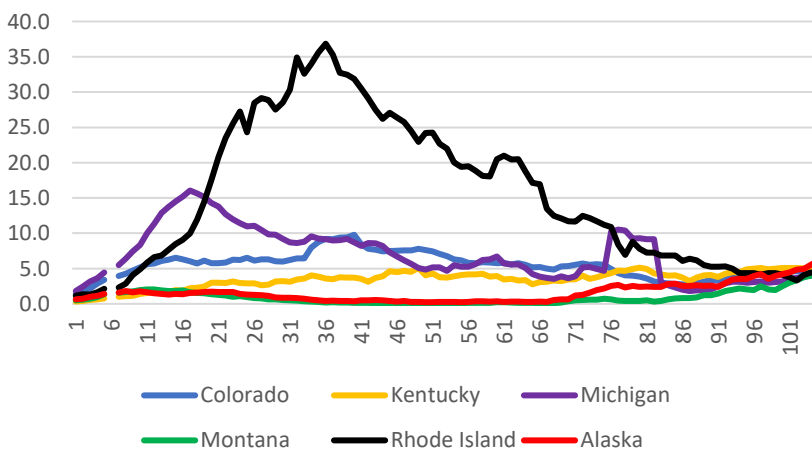
CAases 6.3 - 6.9



Cases 5.0 - 6.2

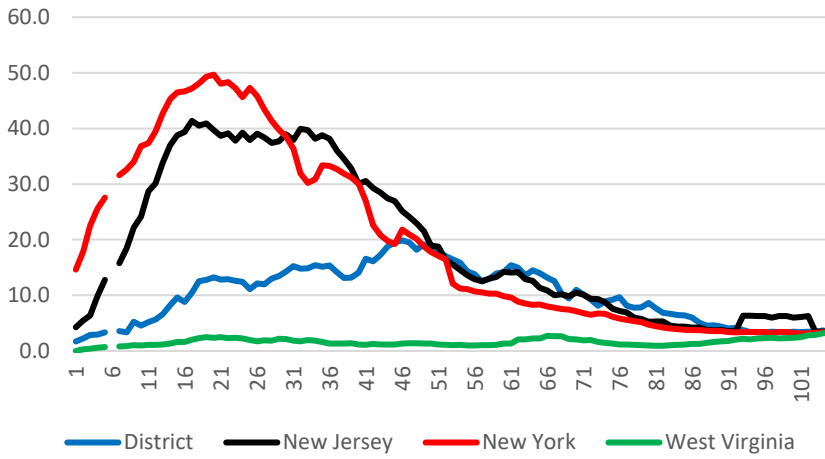


4.0 - 4.9



	Cases	Control index		2016 election	
	1-Jul	23-Mar	1-Jul	Rep	Dem
Vermont	0.9	3	2	30%	57%
Hawaii	1.3	4	2	30%	62%
New Hampshire	1.6	2	1	47%	47%
Connecticut	2.0	2	2	41%	55%
Maine	2.6	1	1	45%	48%
Massachusetts	2.9	3	3	33%	60%

3.0 - 3.9



	Cases	Control index		2016 election	
	1-Jul	23-Mar	1-Jul	Rep	Dem
Connecticut	2.0	2	2	41%	55%
Hawaii	1.3	4	2	30%	62%
Maine	2.6	1	1	45%	48%
Massachusetts	2.9	3	3	33%	60%
New Hampshire	1.6	2	1	47%	47%
Vermont	0.9	3	2	30%	57%

< 3.0

